

IT'S TIME TO GROW

Animals and Plants is part of the **It's Time to Grow** Environmental Learning Pack.



My name is:

Written by: Viktoria Keding
Illustrations: Michelle Gaugler

Design: DHPL 2019

1st edition 2013

Thank you to Elissa Brown & Elizabeth Lammert
for their contribution.

www.nadeet.org

Sponsors:



Brot
für die Welt



Story

Animals, animals all around

In the sky and on the ground



and beetles,



and cats



and bats

Plants, plants, grass and



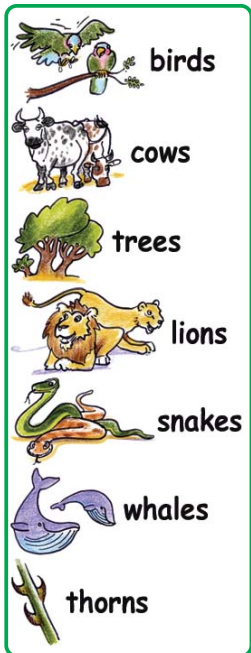
Well-adapted



and leaves

All the life that you can see

Nature helps out you and me.



birds

cows

trees

lions

snakes

whales

thorns

An ostrich egg weighs about 1,5 kg.





Shapes



Find and colour in
the shapes in the
camel-thorn tree:





Sizes

Circle the smallest animal in each row:



An ostrich egg hatches after about 45 days.



Find the differences



Find and circle the 6 differences in the two pictures:

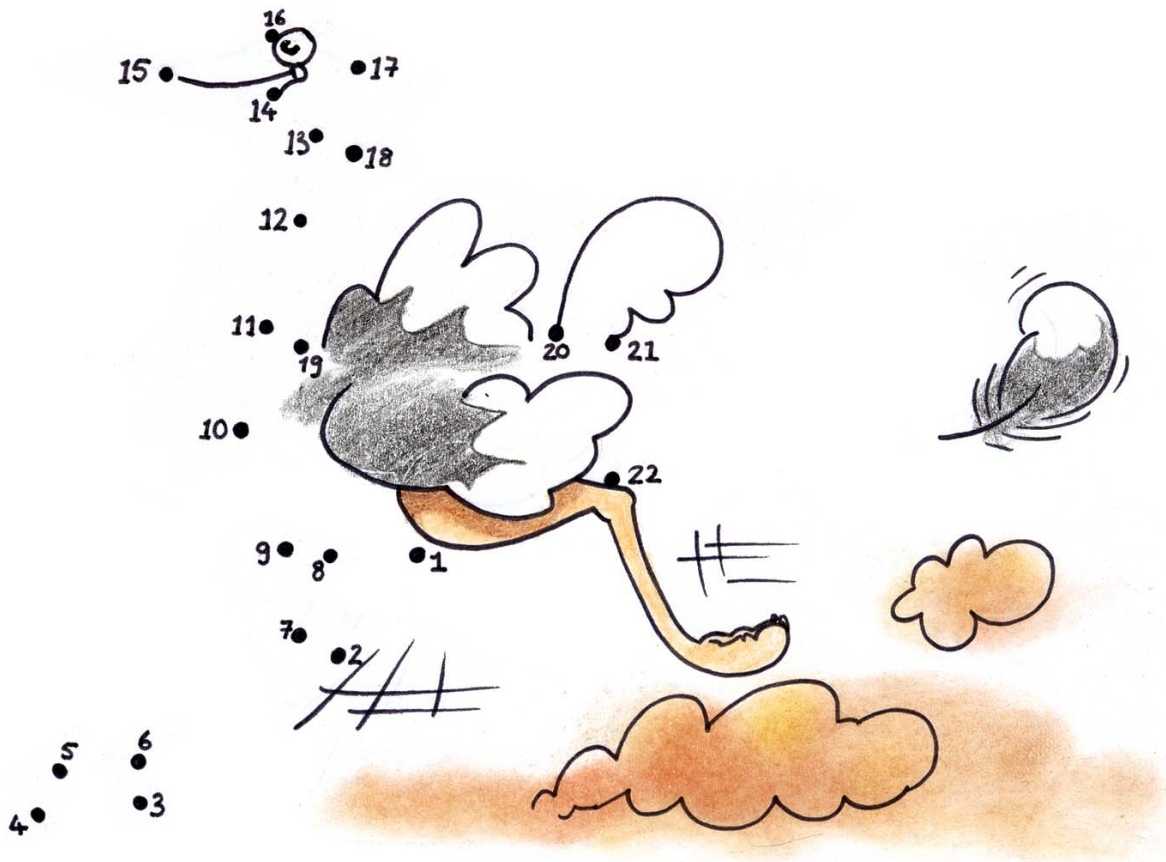


A young ostrich needs to stay close to its parents to avoid being eaten by predators.





Connect the dots from 1 to 22:





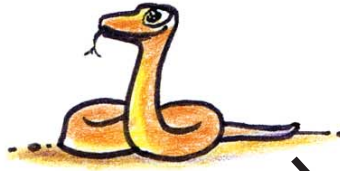
Matching

Help each animal find its food and home.
Draw a line to connect them.

food

animal

habitat

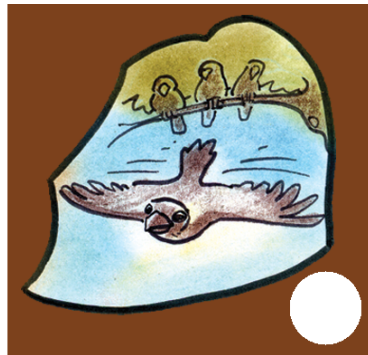
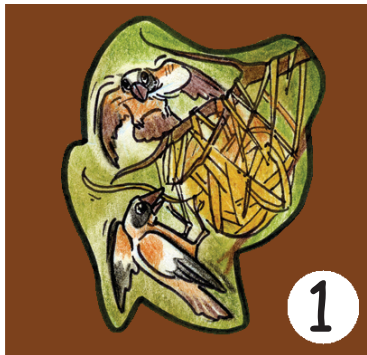
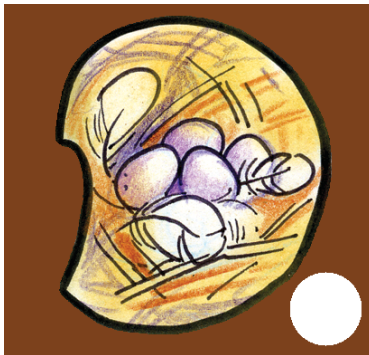
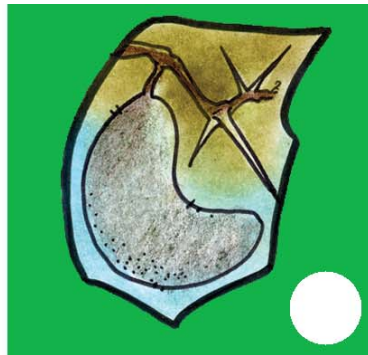
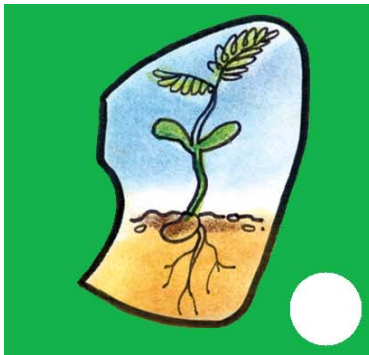


The ostrich eats seeds, grasses and sometimes insects.



Ordering

The story must be put in the correct order.
Write in the number 1, 2, 3 and 4.
The first picture in each story has been
done for you.





Arts + Crafts

Make your own animal mask.



At two years, the ostrich is ready to start its own family.





Did you know the ostrich
at 2-3 metres is the
tallest non-flying bird in
the world?

How tall are you?
Measure yourself on the
Growth Chart.
Go!

